

Smart Guide KIT

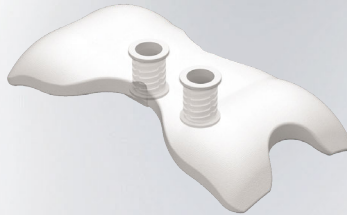
Easy and accurate positioning *without* CT scanning

Our Smart Guide Kit eliminates the use of a CT scan to create a surgical template that is customizable for individual patients. The length of the surgical template sleeve provides a stable and accurate drilling path for precise fixture placement. Because the 3D preformed design template is made in the dental office it reduces production time.



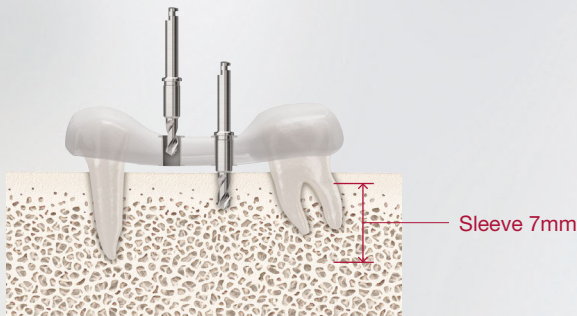
3D Pre-Formed Design

Eliminates the use of a CT scan to create a surgical template.



Sleeve

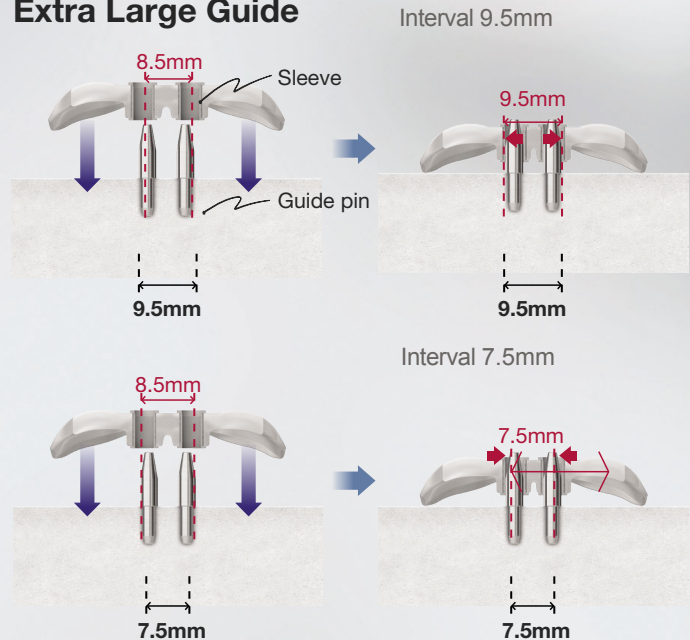
Sleeve length is long to maintain an accurate drilling path.



Self Adjusting Sleeve & Guide Pin

When a smart guide is connected to the guide pin, the gap is automatically adjusted to 1 mm.

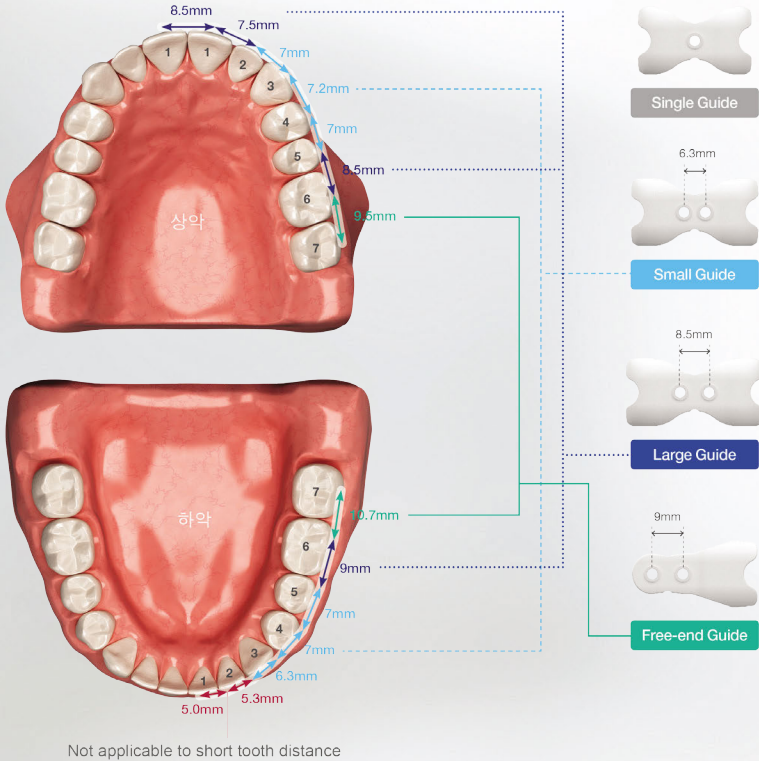
Extra Large Guide



Smart Guide KIT (CONFIGURATION)



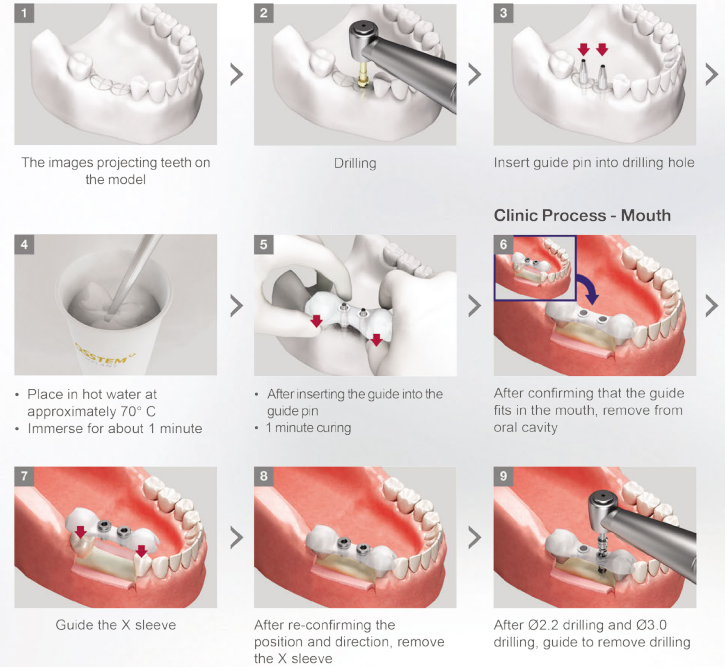
Smart Guide User Guide



How to Use

- Smart guide is non-sterile once disposable and should be used after alcohol (or hexamidine)
- High temperature autoclave, hydrogen peroxide not applicable

Lab Process Plaster Model



Easy and accurate positioning of the insertion point *without* CT scanning

Benefit from the solutions of Hiossen® Implant

Since 2006 Hiossen® Implant a subsidiary of Osstem® Implant has been on a quest to provide professional dental surgeons with quality dental implants, service, and solutions for their patients.

Today, we are among the top five-implant manufacturers in the United States offering quality dental implants to more than 20 countries worldwide. We provide a complete array of dental implant systems and a variety of systematic educational programs with a unique and specialized training center equipped with state-of-the-art facilities, a renowned faculty, and curriculum management.

For more information

To request more information contact your local Hiossen manager or visit our website at www.hiossen.com.